



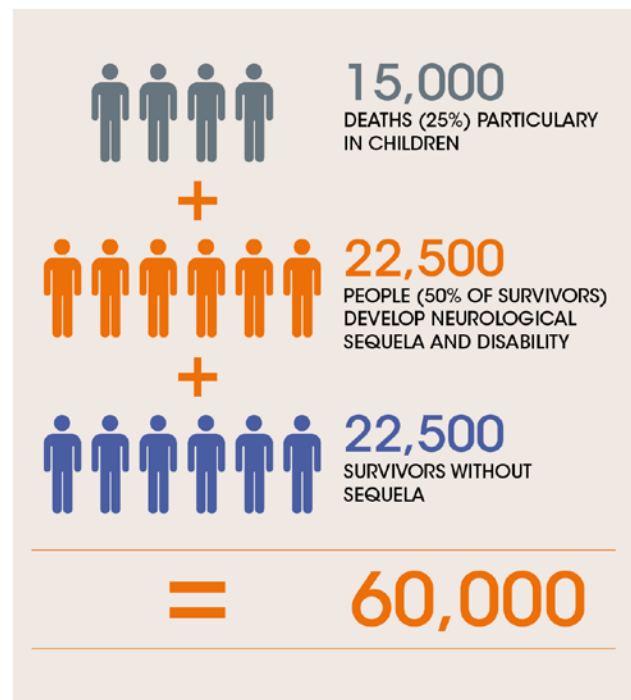
## NEXT GENERATION VACCINE AGAINST JAPANESE ENCEPHALITIS

### AN INNOVATIVE VACCINE

- There is no specific treatment against Japanese Encephalitis (JE). Vaccination is the most important control measure. <sup>1</sup>
- Sanofi Pasteur JE vaccine is a live-attenuated vaccine.
- The vaccine is indicated for people from 12 months of age and over.
- The JE vaccine requires a single dose for immunization against JE in adults. In children, a booster dose is recommended 12 to 24 months after the primary injection to ensure long-term protection. <sup>\*</sup>
- This makes vaccination convenient for both patient and physician, and encourages compliance for better protection.

*\* The booster recommendation is under review by the Australian health authority.*

### NEARLY 60,000 JAPANESE ENCEPHALITIS CASES PER YEAR

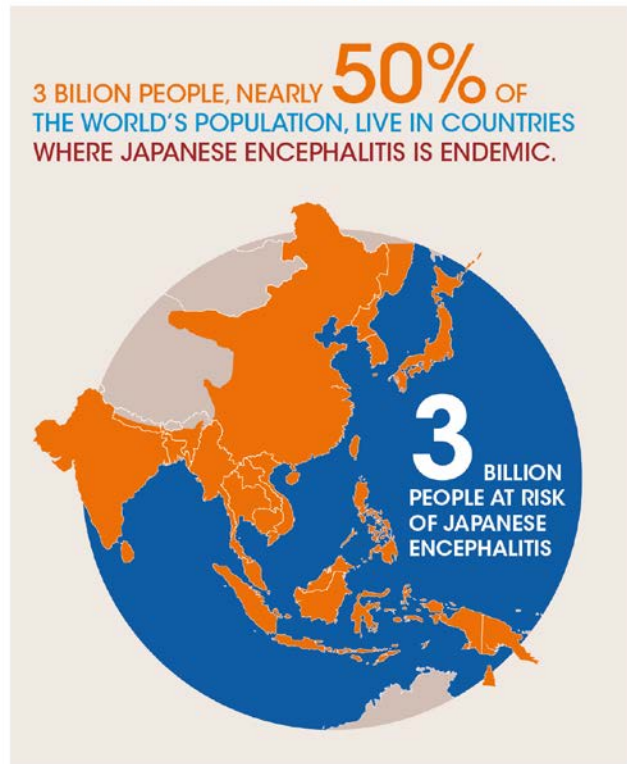


### TRAVELERS ARE AT RISK OF JAPANESE ENCEPHALITIS

- JE can also affect children and adults travelling in countries where the JE virus is endemic
- The U.S. Advisory Committee on Immunization practices (ACIP) currently recommends JE vaccination for travelers who plan to spend a month or longer in endemic areas during JE transmission season. <sup>5</sup>
- JE vaccine should be considered for short-term (<1 month) travelers to endemic areas during the transmission season if they plan to travel outside of an urban area and will have an increased risk of JE exposure. <sup>5</sup>

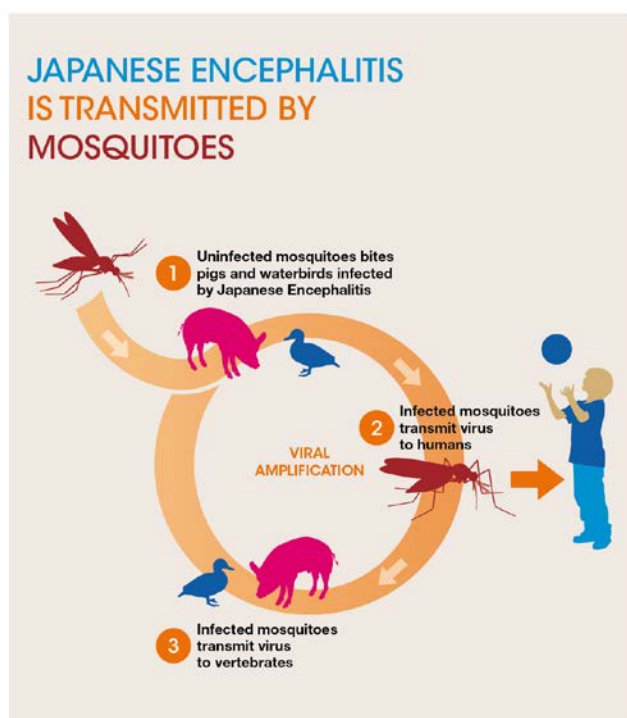
- JE can affect children and adults living in endemic countries.
- The need for increased regional and national awareness of JE and for international support to control the disease is urgent. According to the World Health Organization (WHO), JE immunization should be integrated into the routine immunization (EPI – Expanded Programme of Immunization) in all areas where JE is a public health issue.<sup>1</sup>

## JAPANESE ENCEPHALITIS A LARGE ENDEMIC AREA



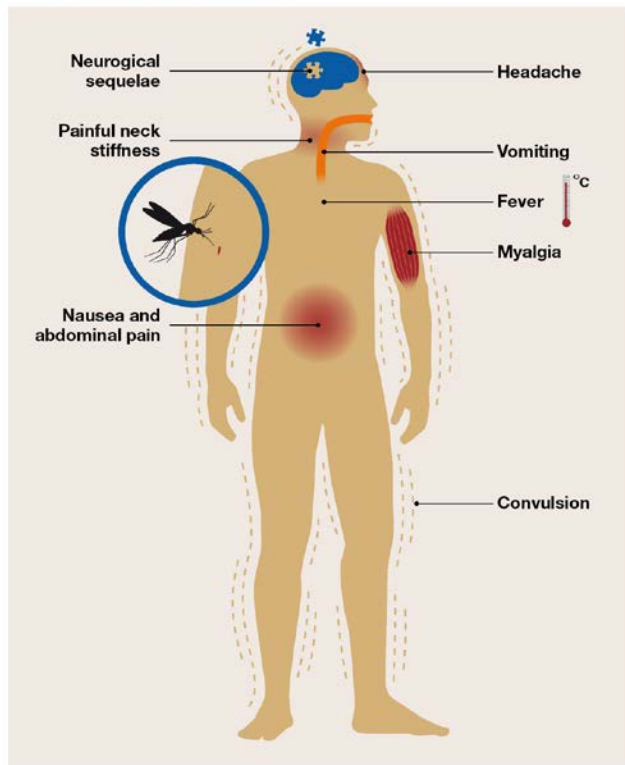
- The virus causing JE is transmitted by mosquitoes belonging to the Culex family, which breed particularly in flooded rice fields.<sup>6</sup>
- The virus circulates in birds such as herons and egrets.<sup>6</sup>
- Pigs are amplifying hosts, in that the virus reproduces in pigs and infects mosquitoes that take blood meals, but does not cause disease.<sup>6</sup>
- The virus tends to spill over into human populations when infected mosquito populations build up explosively and the human biting rate increases (these culicines are normally zoophilic, i.e. they prefer to take blood meals from animals).<sup>6</sup>

## HOW IS JAPANESE ENCEPHALITIS TRANSMITTED?



## JAPANESE ENCEPHALITIS SYMPTOMS

- After an incubation period of 6 to 14 days, first signs appear:<sup>7</sup>
- Abrupt onset of fever >38°C is associated with myalgia, headache, painful neck stiffness and vomiting.
- Children may present with nausea, vomiting and abdominal pain and non-specific signs can continue for 2 to 4 days.
- Patient's condition can deteriorate rapidly, ultimately leading to coma.
- Convulsions experienced by 85% of patients.
- 50% of survivors develop serious neurological sequela.<sup>3</sup>



### Références :

1. WHO website - Weekly epidemiological record, accessed on October 2012  
<http://www.who.int/wer/2003/en/wer7840.pdf>
2. Campbell GL, Hills SL, Fischer M, Jacobson JA, Hoke CH, Hombach JM et al. Estimated global incidence of Japanese encephalitis: a systemic review. Bull World Health Organ. 201 1;89:766-774E.
3. Misra UK, Kalita J. Overview: Japanese encephalitis. Progress in Neurobiology.2010;4:108-20.
4. Erlanger TE, Weiss S, Keiser J, Utzinger J, Wiedenmayer K. Past, Present and Future of Japanese Encephalitis
5. CDC Website - Japanese Encephalitis Vaccines Recommendations of the Advisory Committee on Immunization Practices (ACIP), accessed on October 2012  
<http://www.cdc.gov/mmwr/pdf/rr/rr5901.pdf>
6. WHO website – water related diseases, Japanese Encephalitis  
[http://www.who.int/water\\_sanitation\\_health/diseases/encephalitis/en/](http://www.who.int/water_sanitation_health/diseases/encephalitis/en/)
7. Diagona (2007)

Updated January 2018

### CONTACT:

**Global Media Relations**  
Laurence Bollack  
T. +33 (0)1 53 77 46 46  
MR@sanofi.com  
[www.sanofipasteur.com](http://www.sanofipasteur.com)