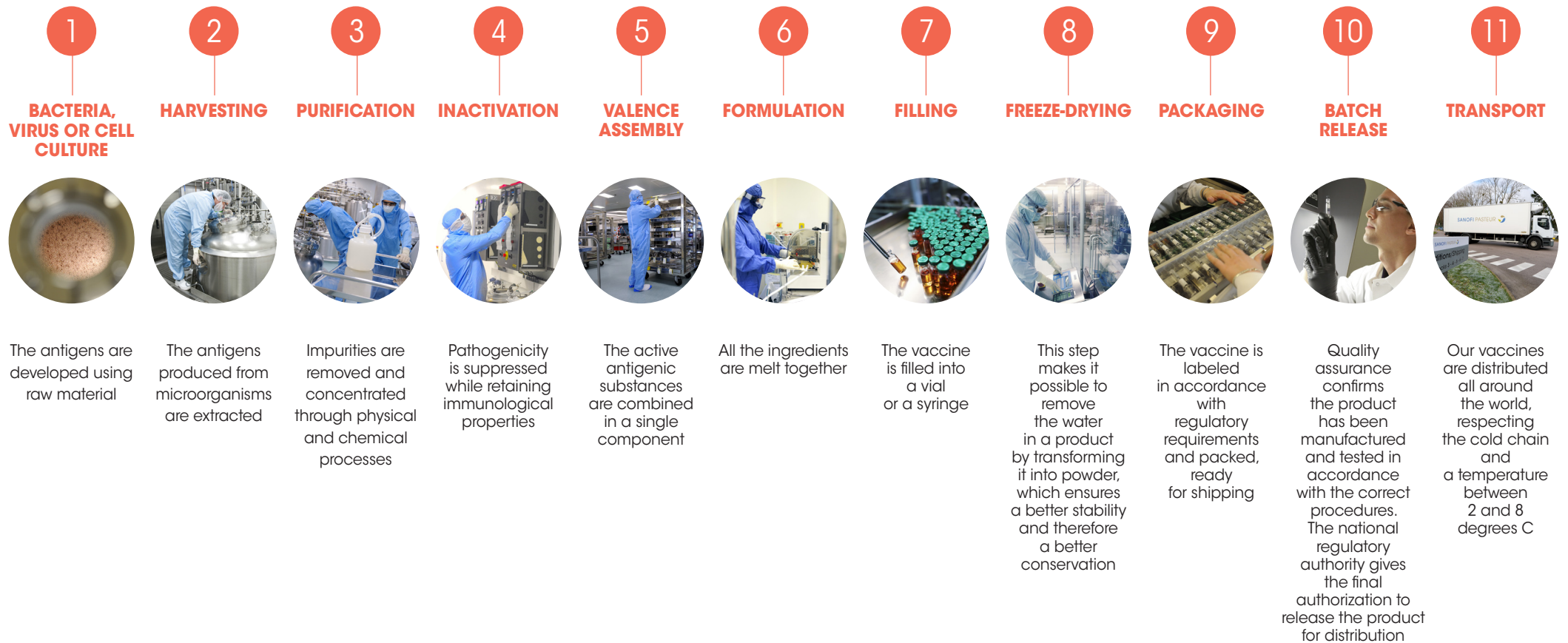


# VACCINES: A COMPLEX MANUFACTURING PROCESS



PRODUCTION TAKES BETWEEN  
**6 AND 36 MONTHS**

**70%** OF THE TIME OF PRODUCTION OF A VACCINE IS DEDICATED TO **QUALITY CONTROL**, WHICH REPRESENTS SEVERAL HUNDREDS OF TESTS