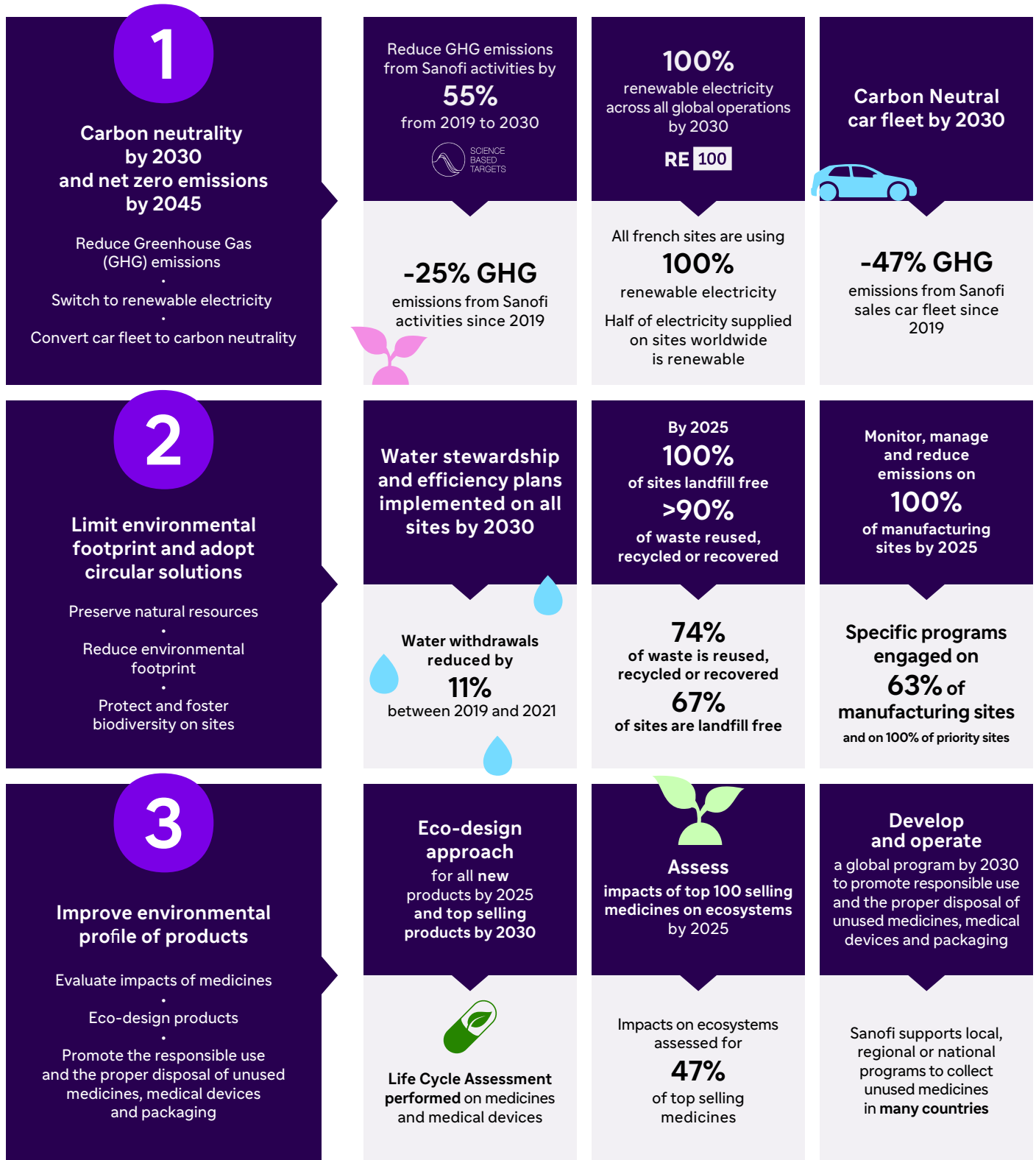


How Sanofi is building a *sustainable* environment

Sanofi is working to minimize the impacts of its activities and medicines on the environment through its Planet Care environmental sustainability program, an approach that engages everyone at Sanofi.

Please reach out to planetcare@sanofi.com to get an accessible version of this information.



Sanofi believes that working closely with its suppliers to reduce their overall environmental impact, will lead us towards a more sustainable sourcing of raw materials. In line with the Science Based Target initiative, an objective to reduce value chain GHG emissions has been set: -30%* from 2019 to 2030. *New target under validation by SBTi. 14% reduction target already validated.